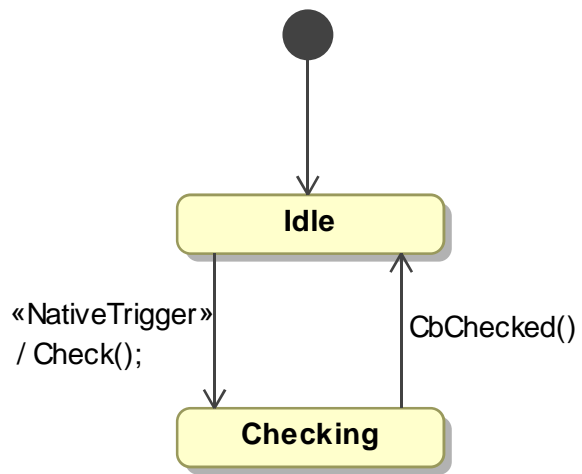
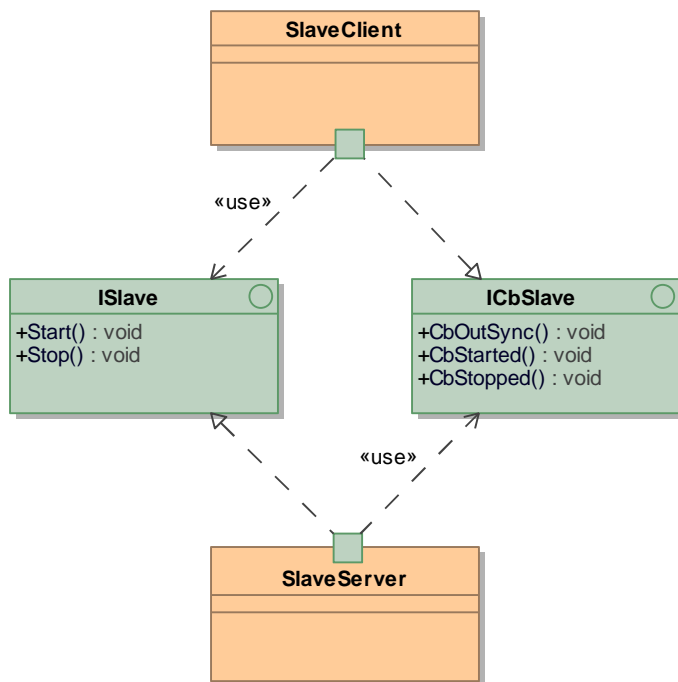
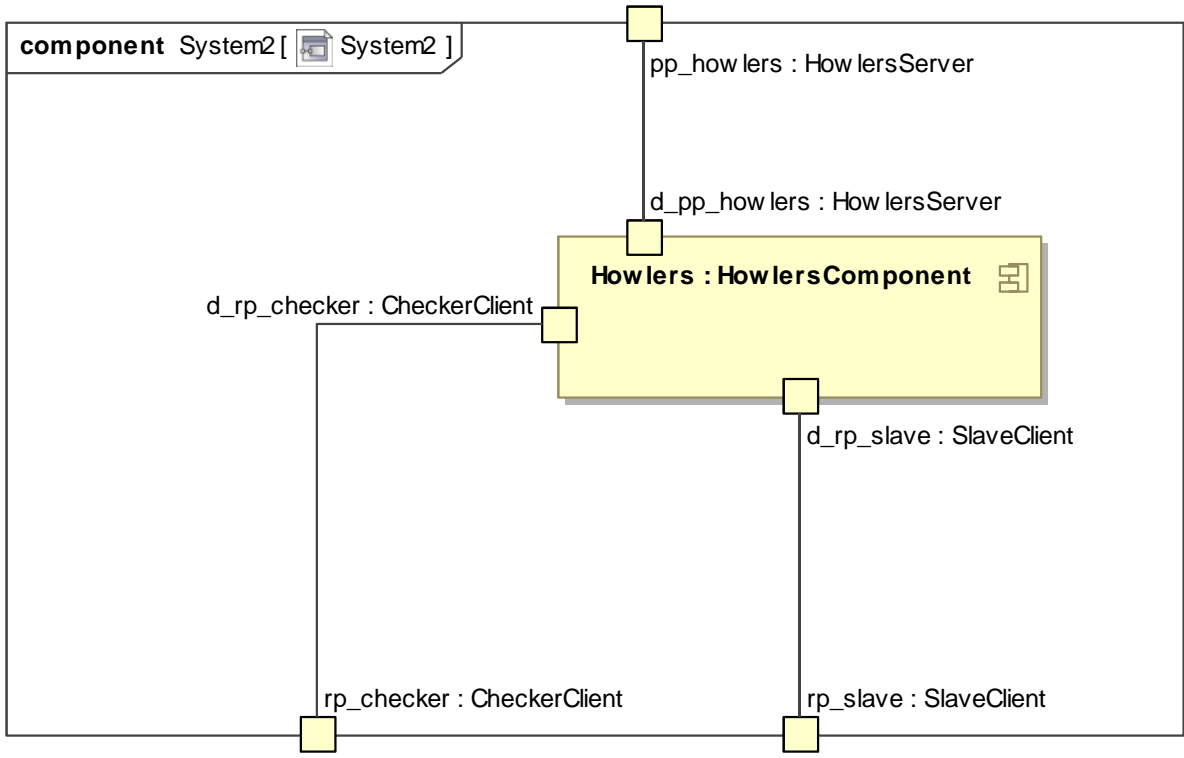


state machine CheckerClientPsm [  CheckerClientPsm ]

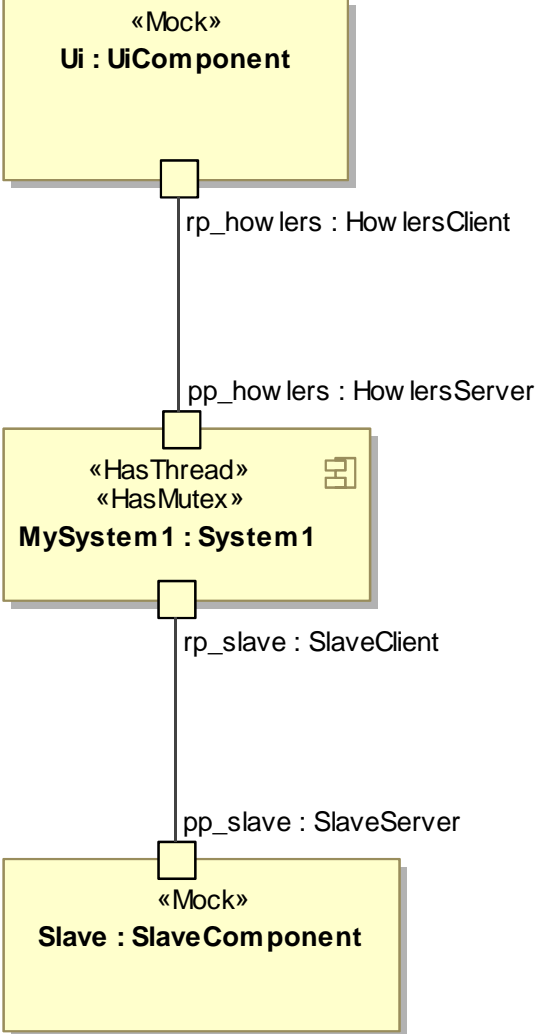


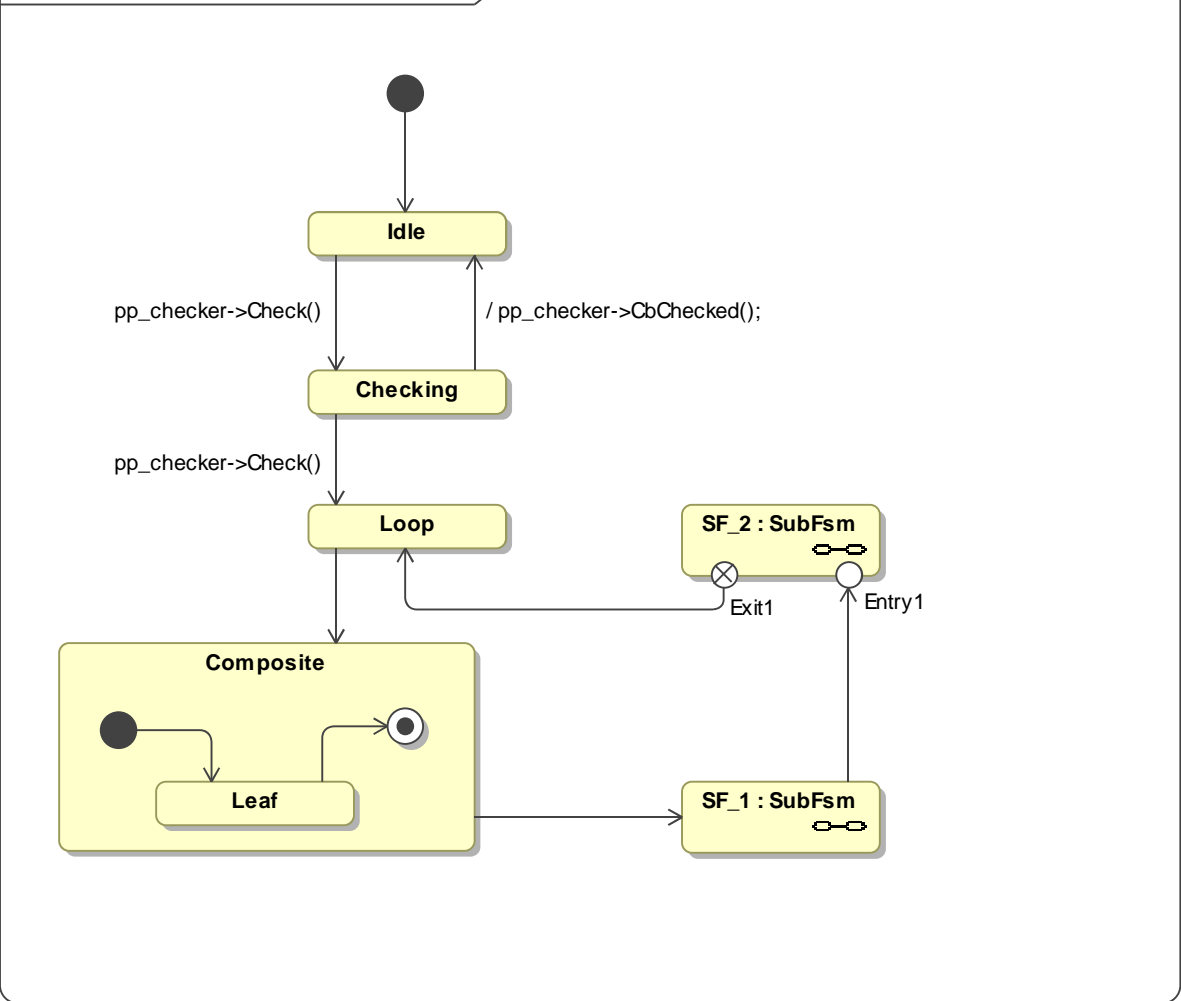
package SlaveProtocol [ SlaveClasses ]

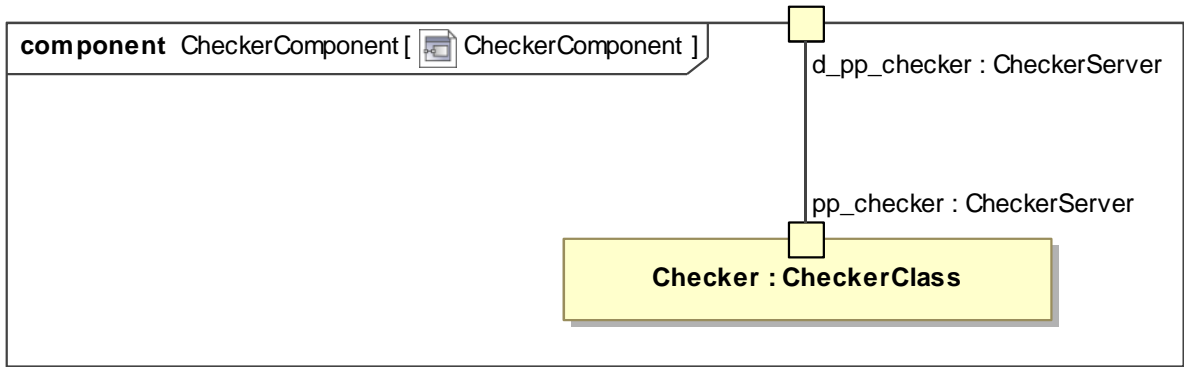




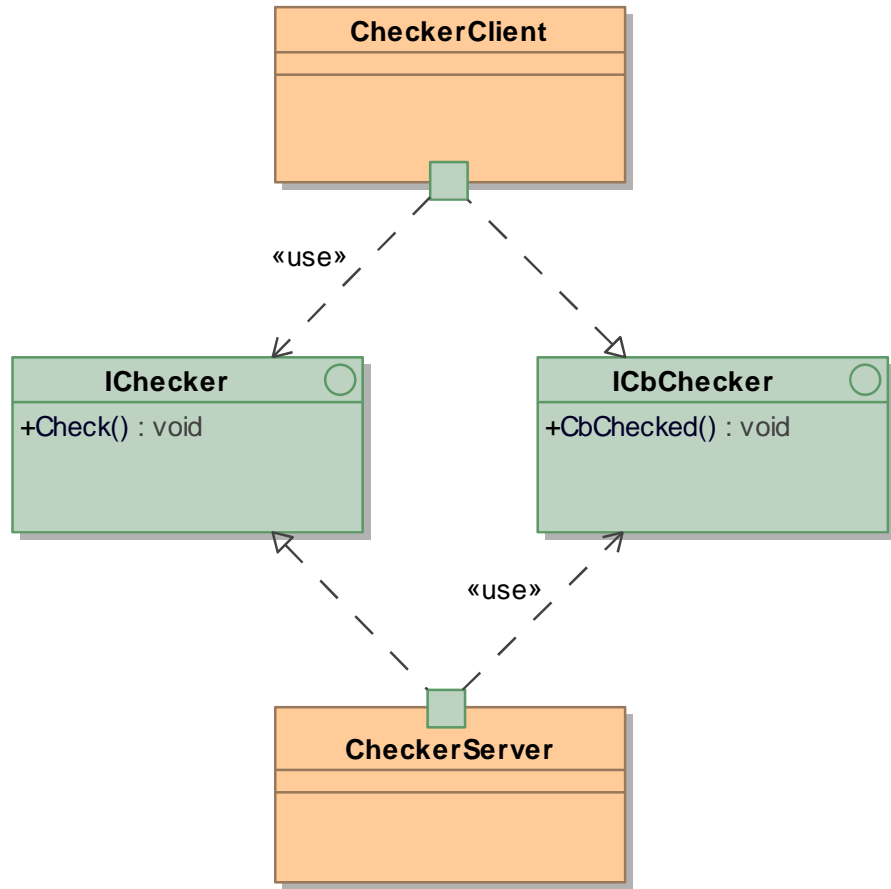
class ExecEnv1 [ Context1 ]





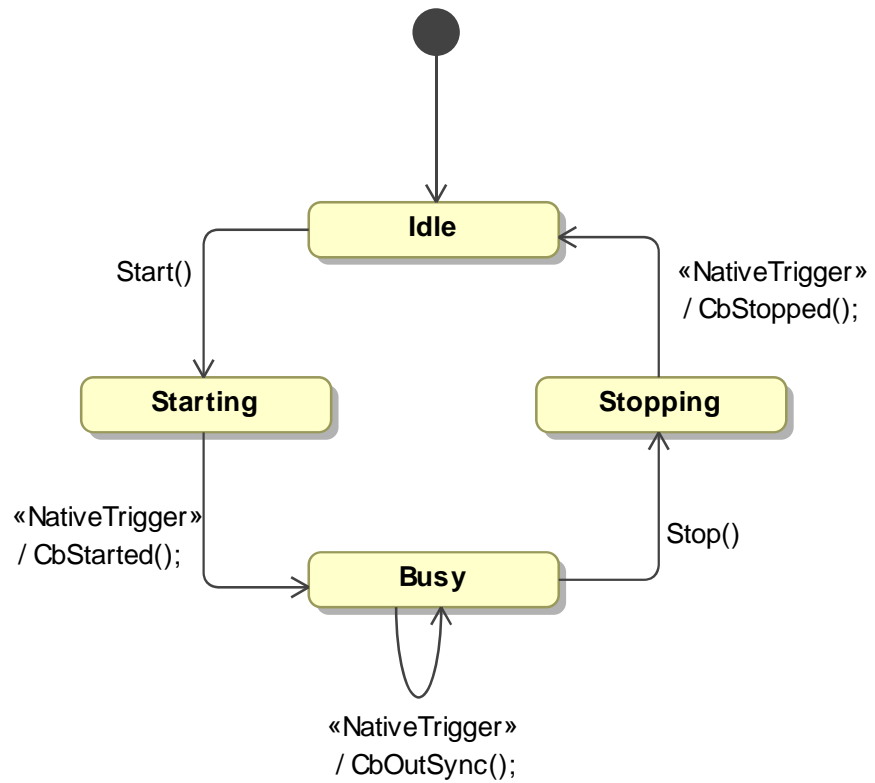


package CheckerProtocol [ CheckerClasses ]

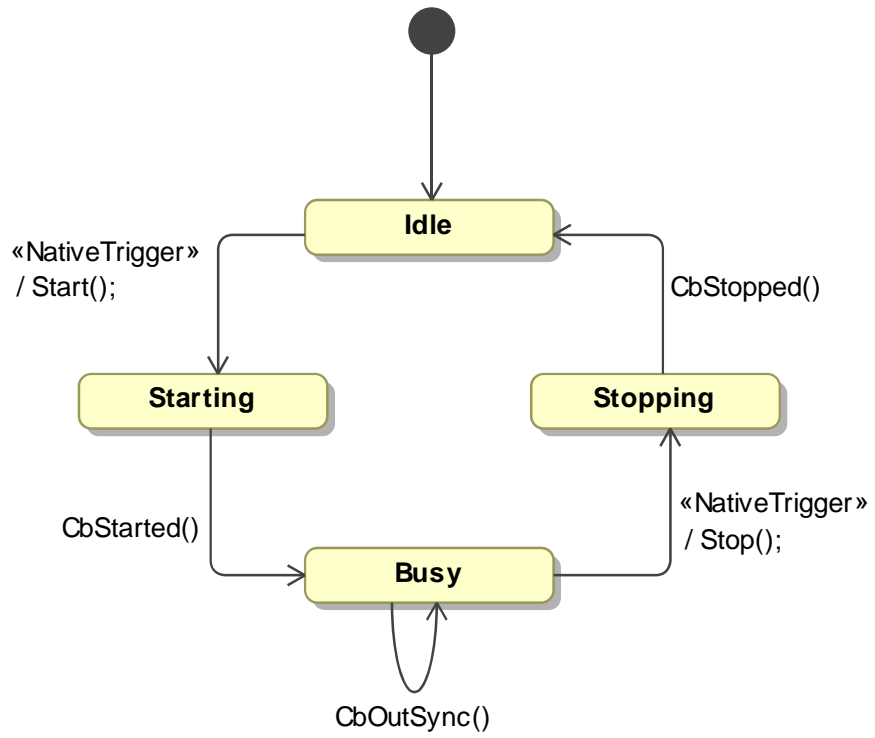


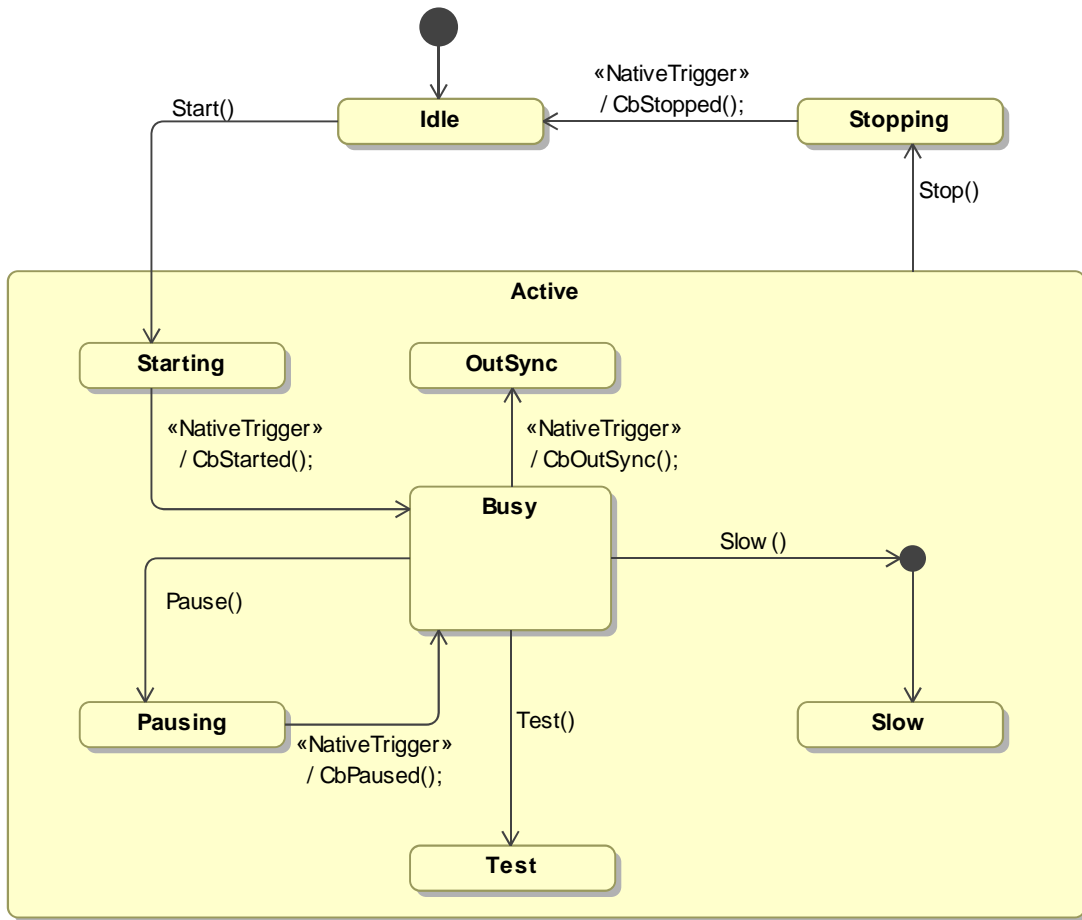


state machine SlaveServerPsm [ SlaveServerPsm ]

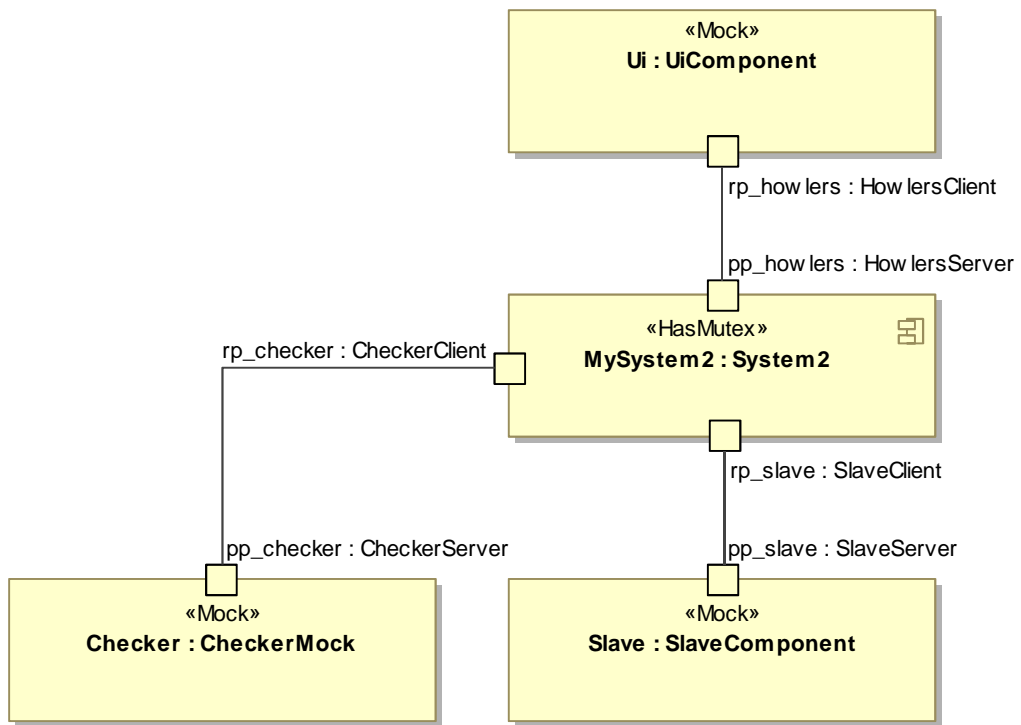


state machine SlaveClientPsm [ SlaveClientPsm ]

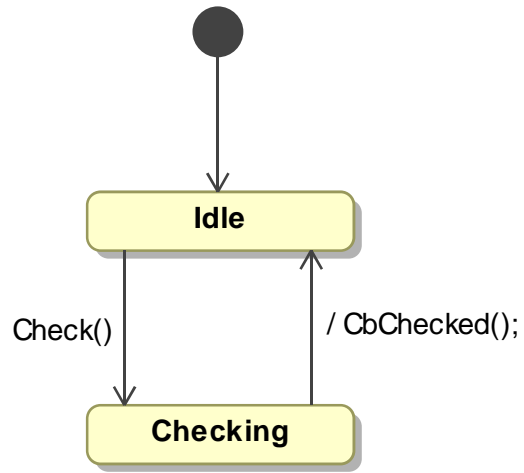


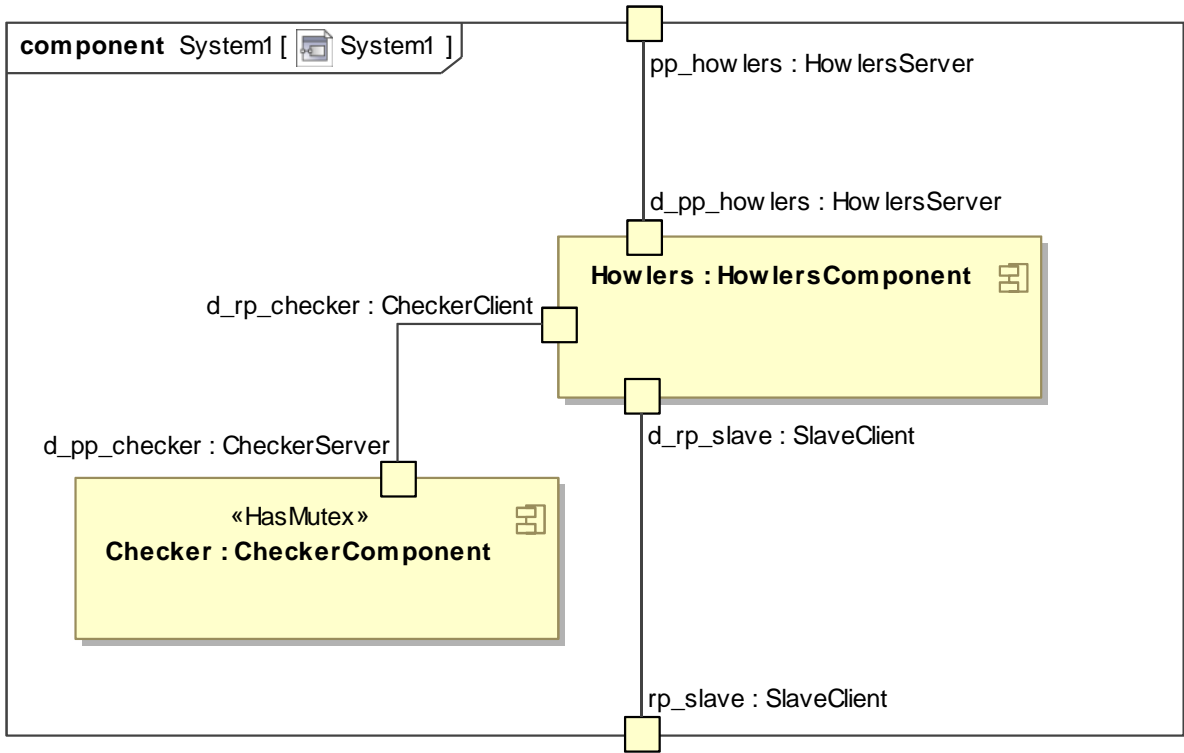


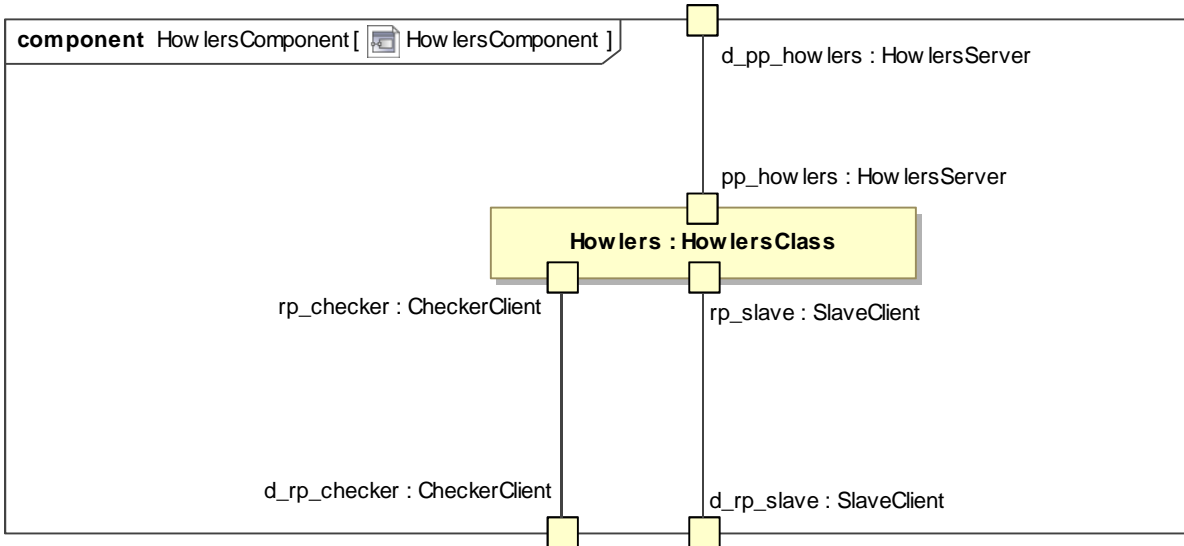
class ExecEnv2 [ Context2 ]

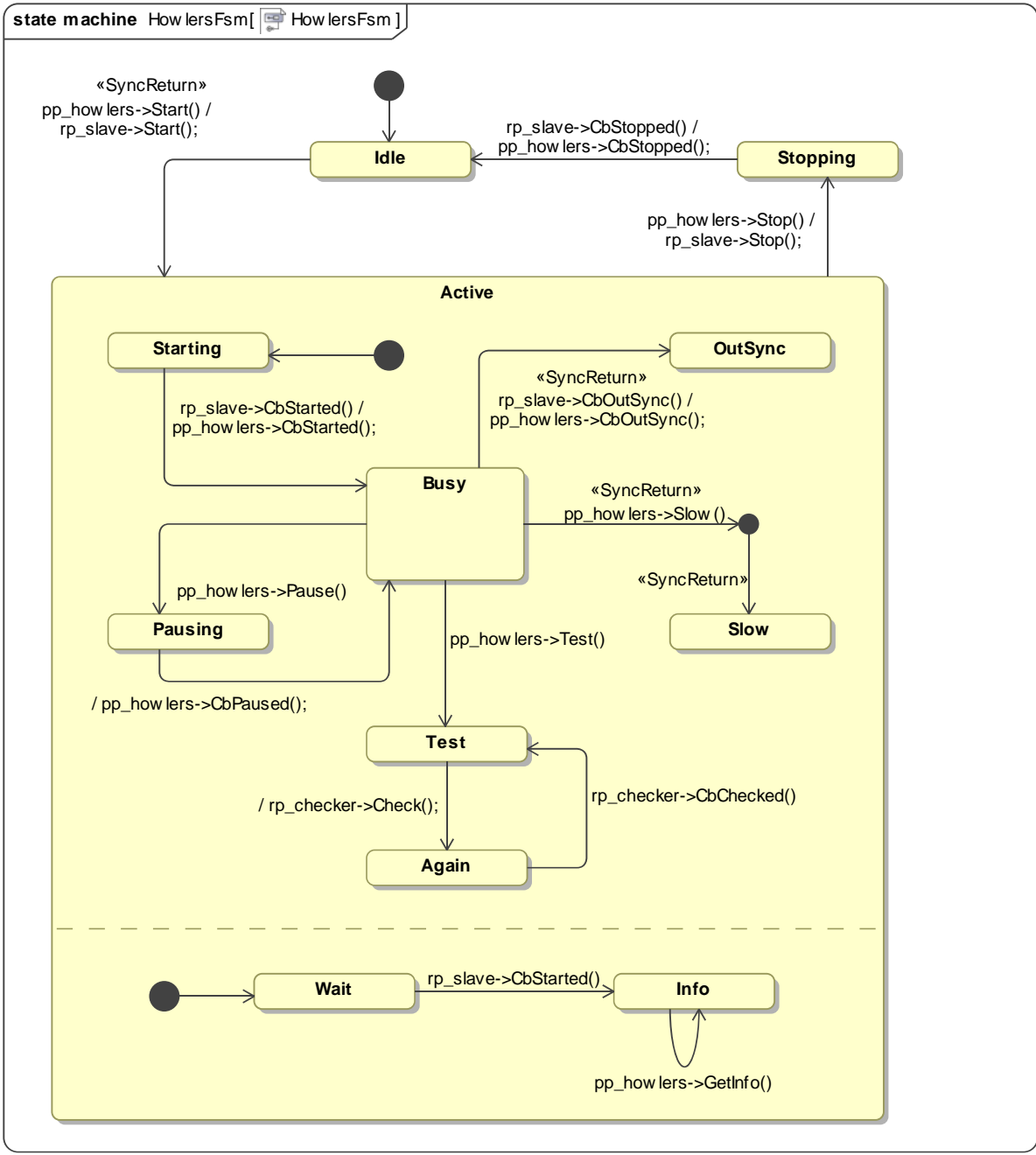


state machine CheckerServerPsm [ CheckerServerPsm ]











package HowlersProtocol[ HowlersClasses ]

