
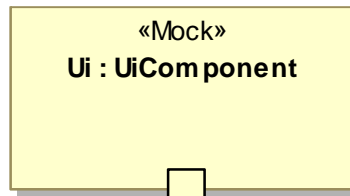
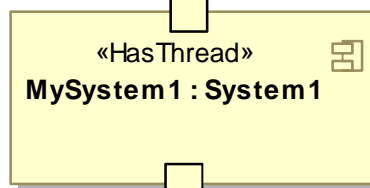


class ExecEnv1 [ Context1]



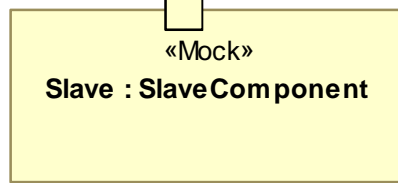
rp_how lers : How lersClient


pp_how lers : How lersServer

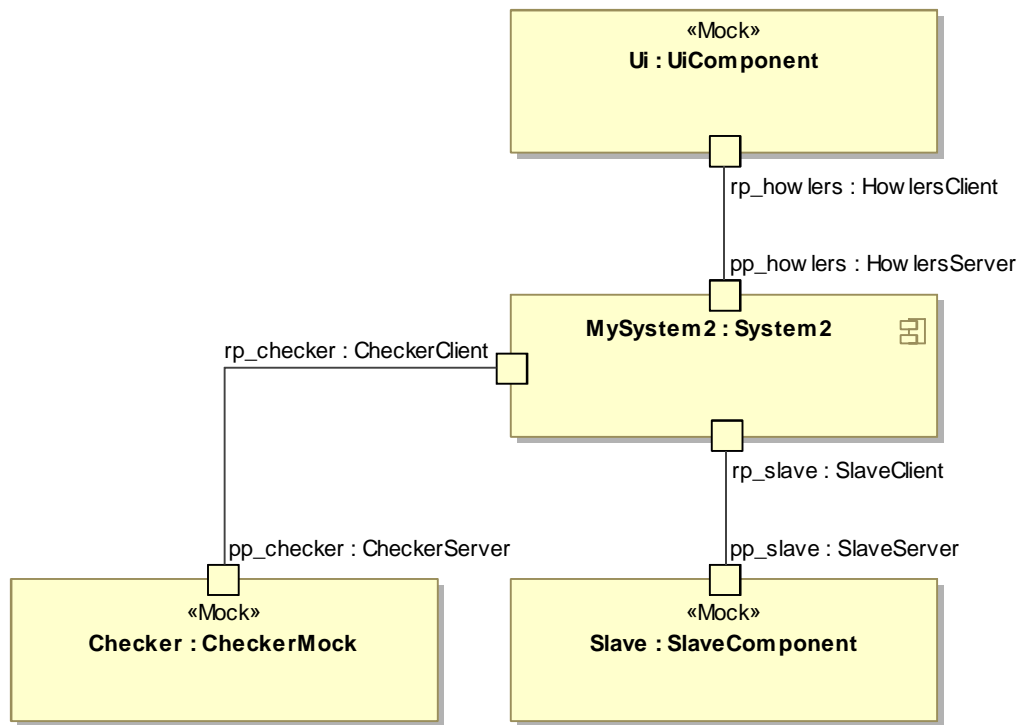


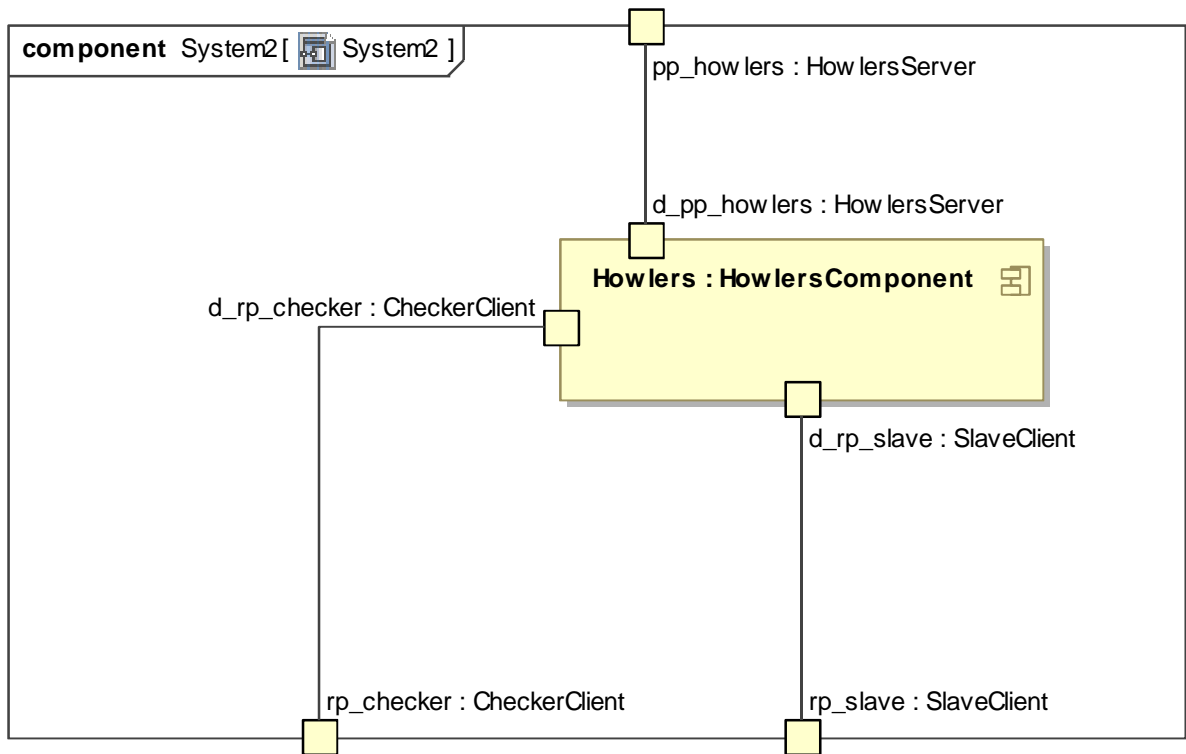
rp_slave : SlaveClient

pp_slave : SlaveServer

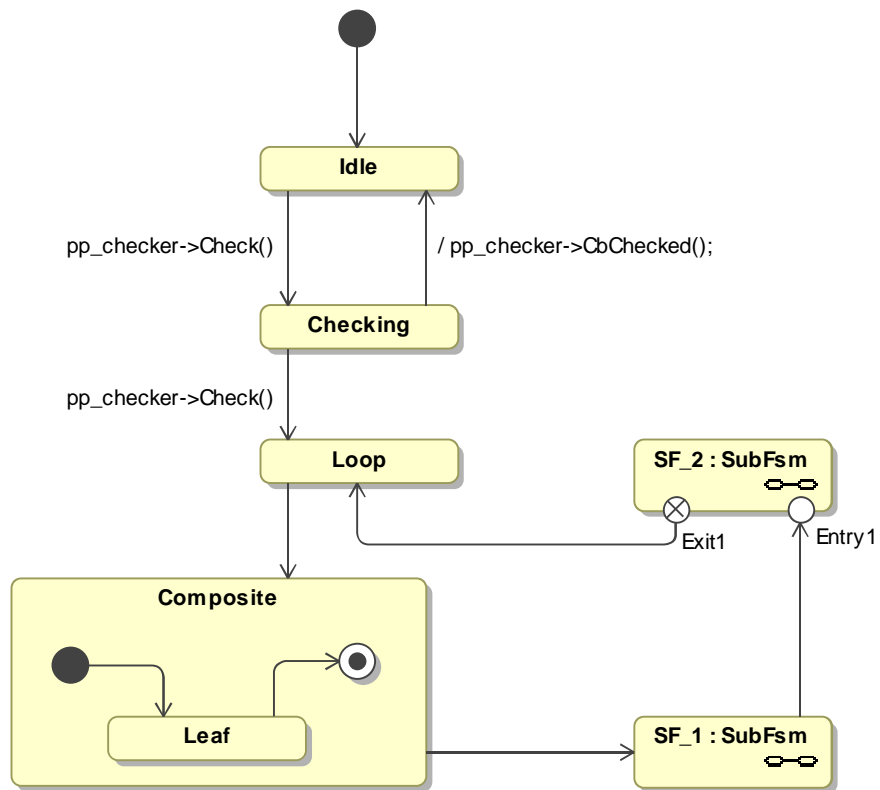


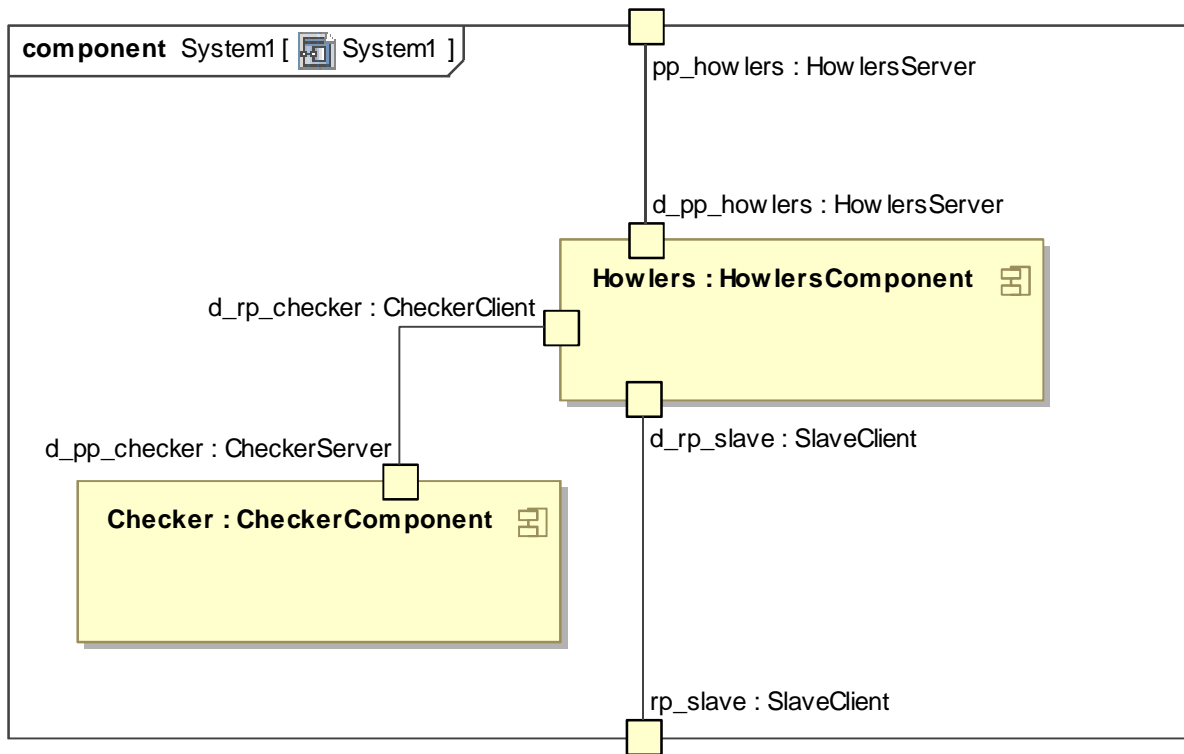
class ExecEnv2 [ Context2]



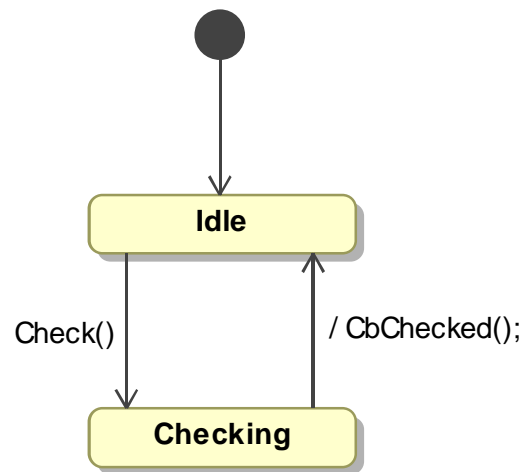


state machine CheckerFsm[ CheckerFsm]

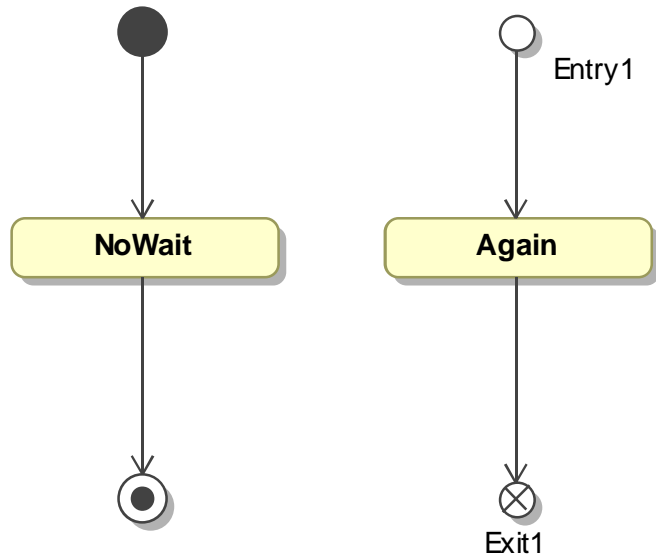




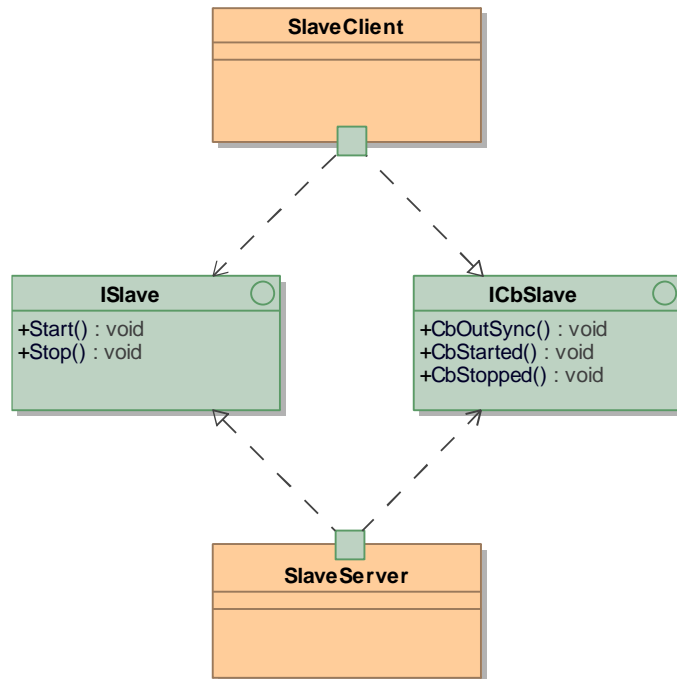
state machine CheckerServerPsm[ CheckerServerPsm]




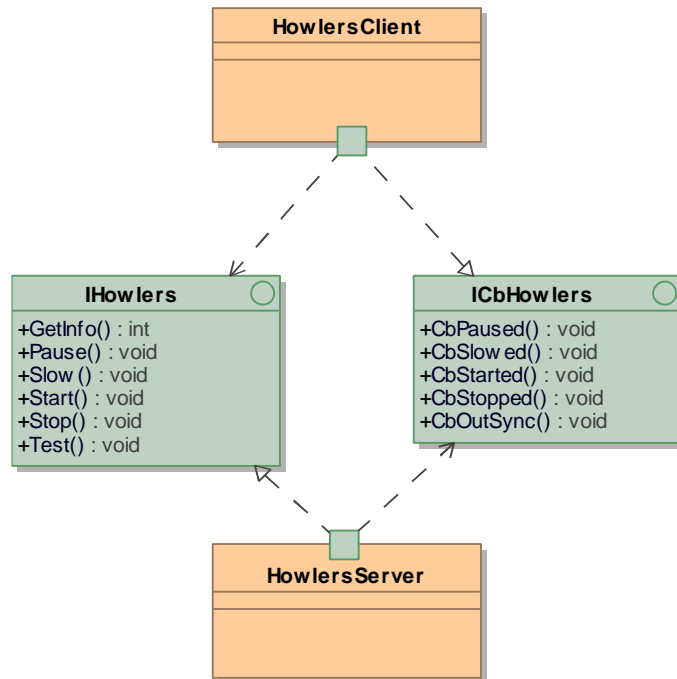
state machine SubFsm[ SubFsm]

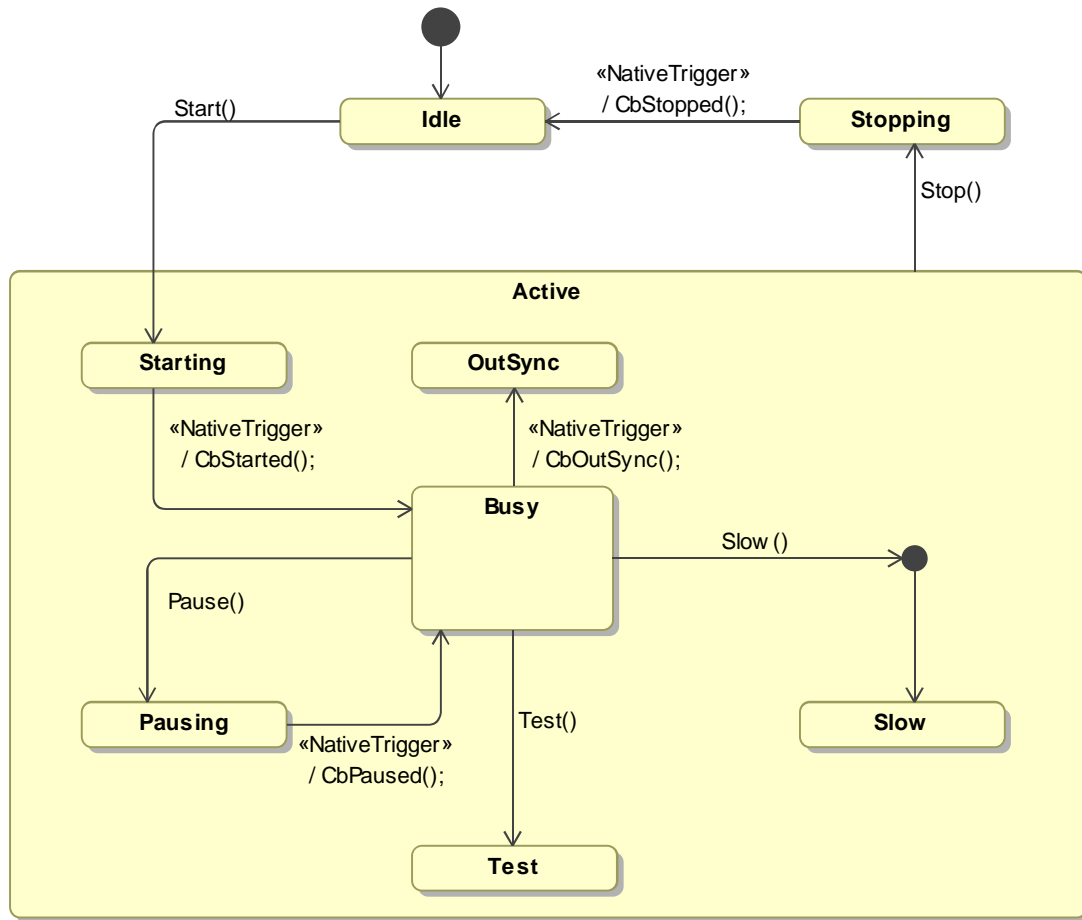


package SlaveProtocol[SlaveClasses]

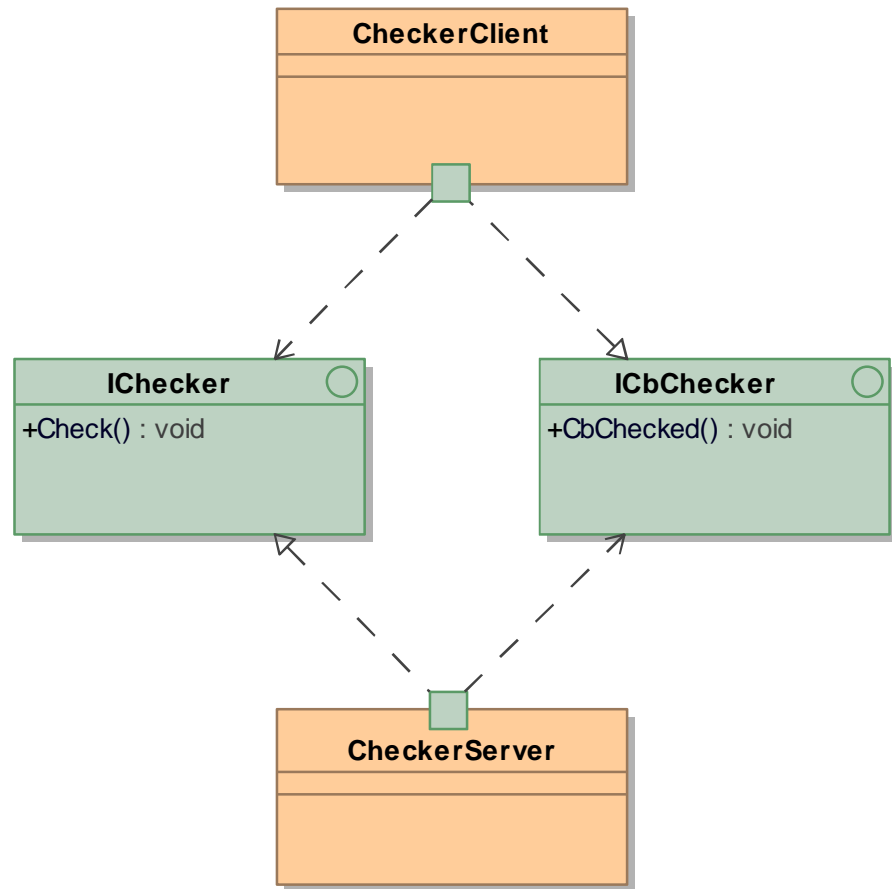


package HowlersProtocol[ HowlersClasses]

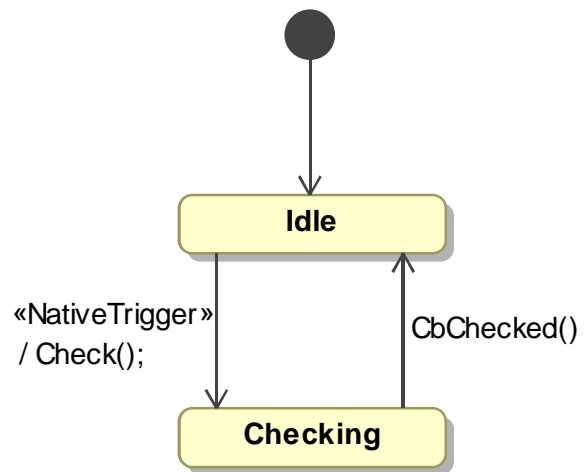




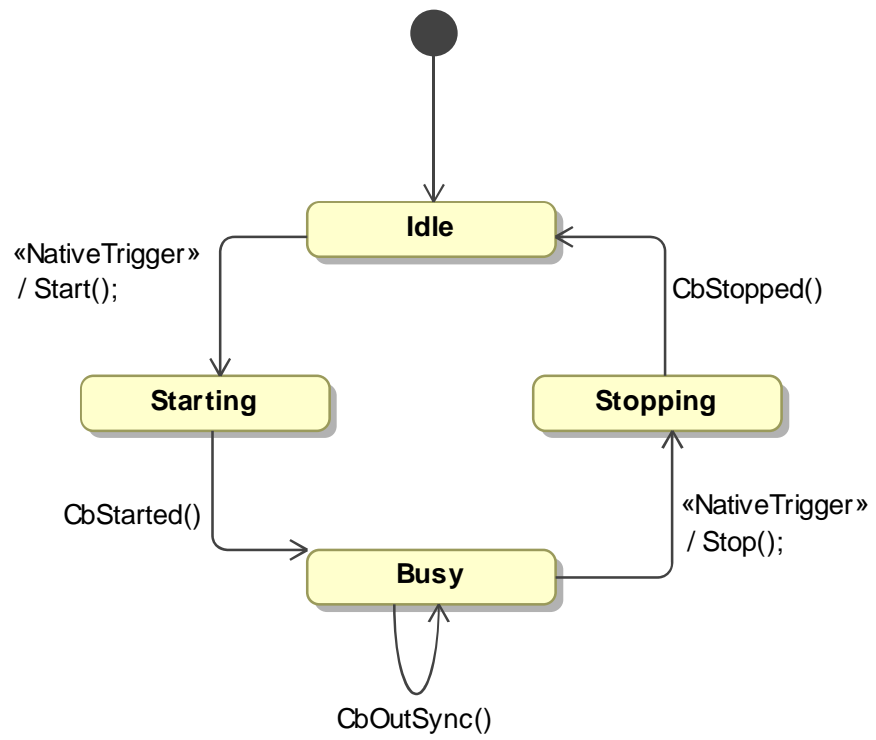
package CheckerProtocol [CheckerClasses]




state machine CheckerClientPsm[ CheckerClientPsm]



state machine SlaveClientPsm[ SlaveClientPsm]

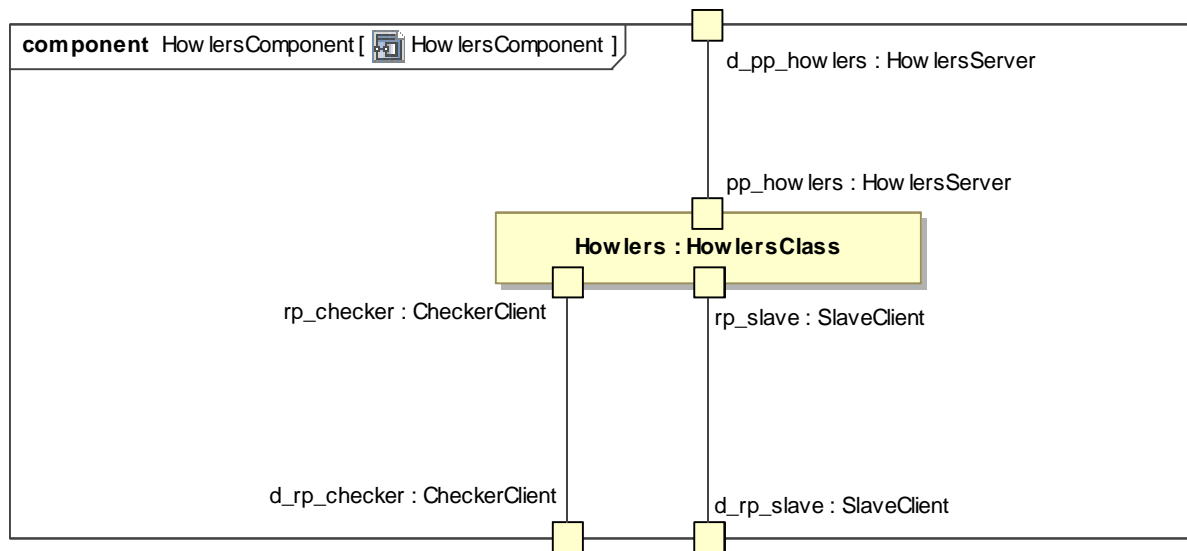


component CheckerComponent [ CheckerComponent]

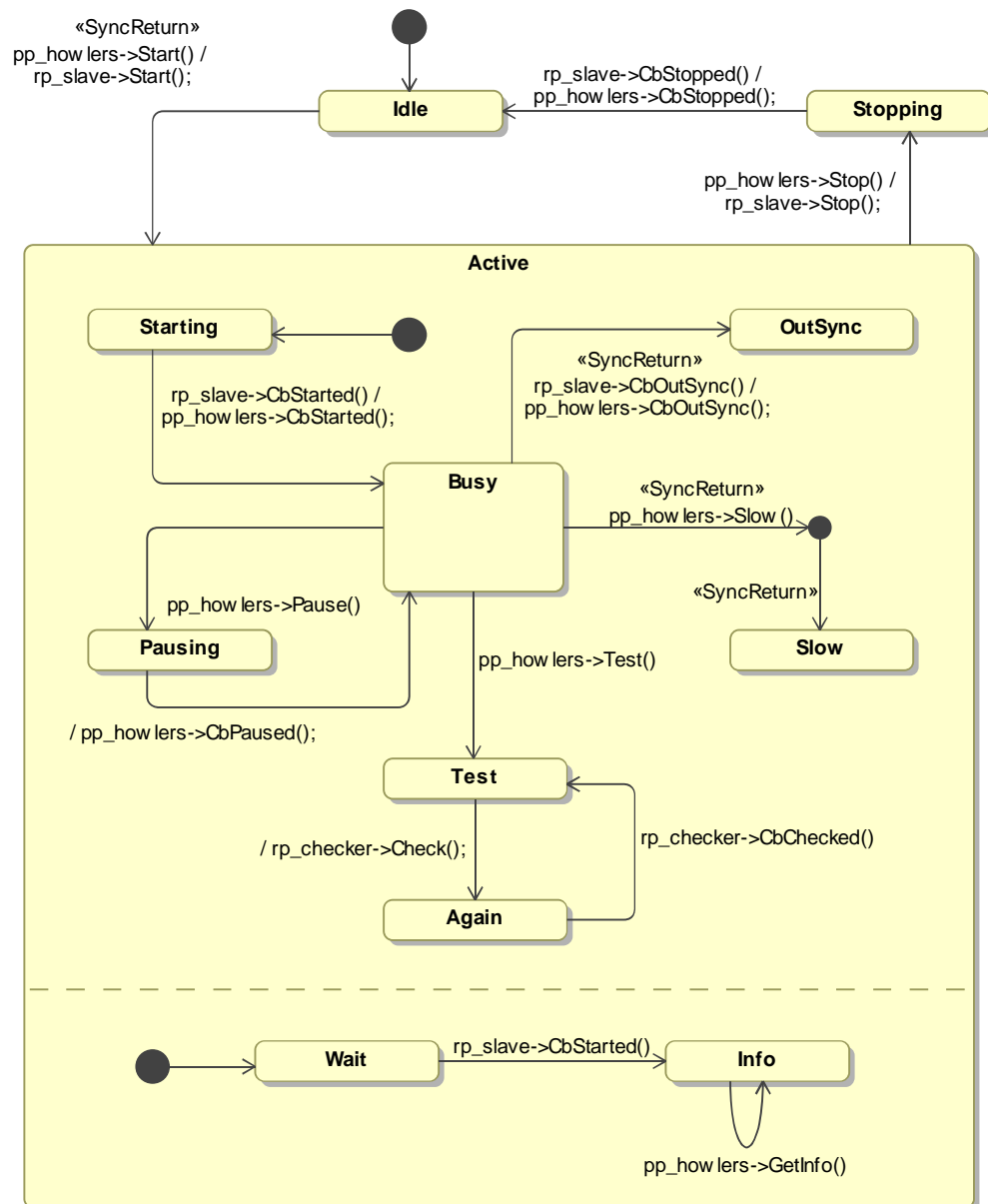
d_pp_checker : CheckerServer

pp_checker : CheckerServer

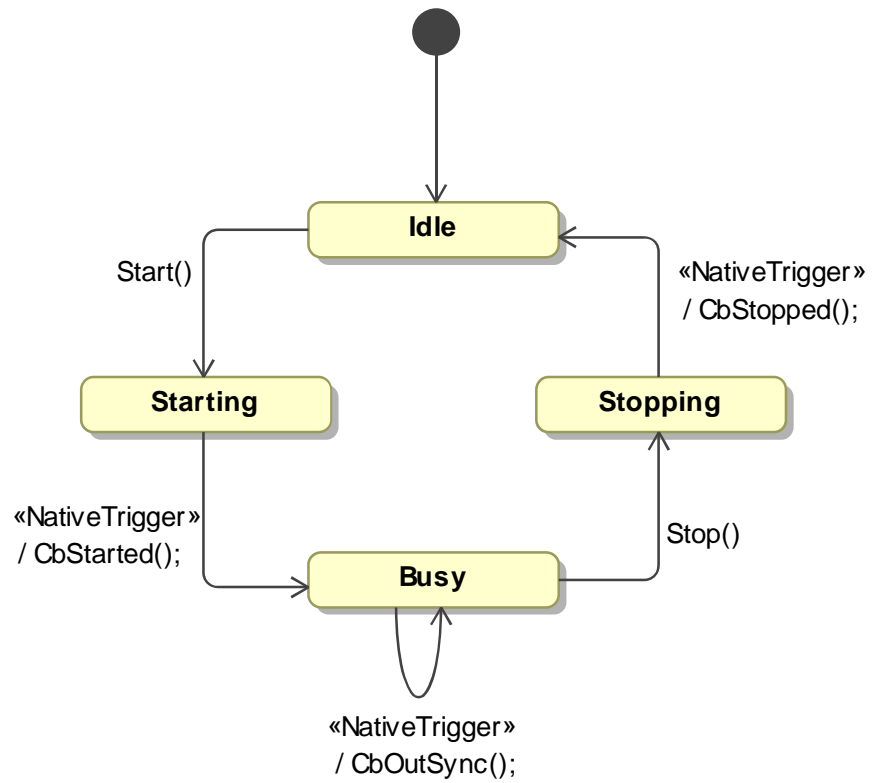
Checker : CheckerClass



state machine HowlersFsm[HowlersFsm]



state machine SlaveServerPsm[ SlaveServerPsm]



state machine How lersClientPsm[ How lersClientPsm]

