



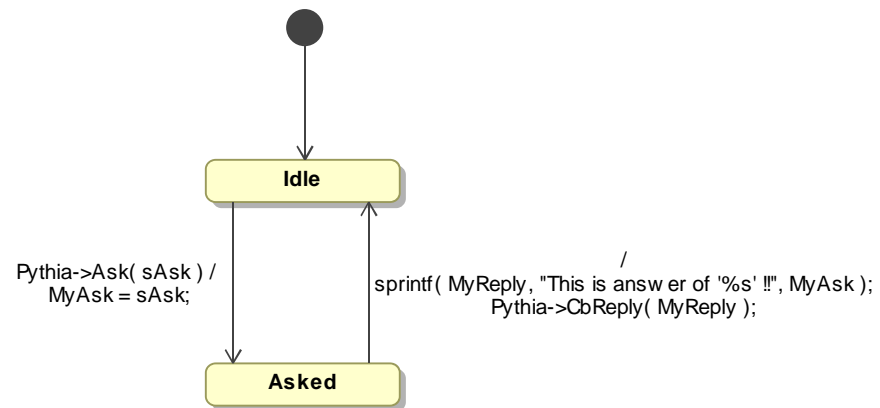
**component** OracleComponent [  OracleComponent ]


pp\_Oracle : OracleServer

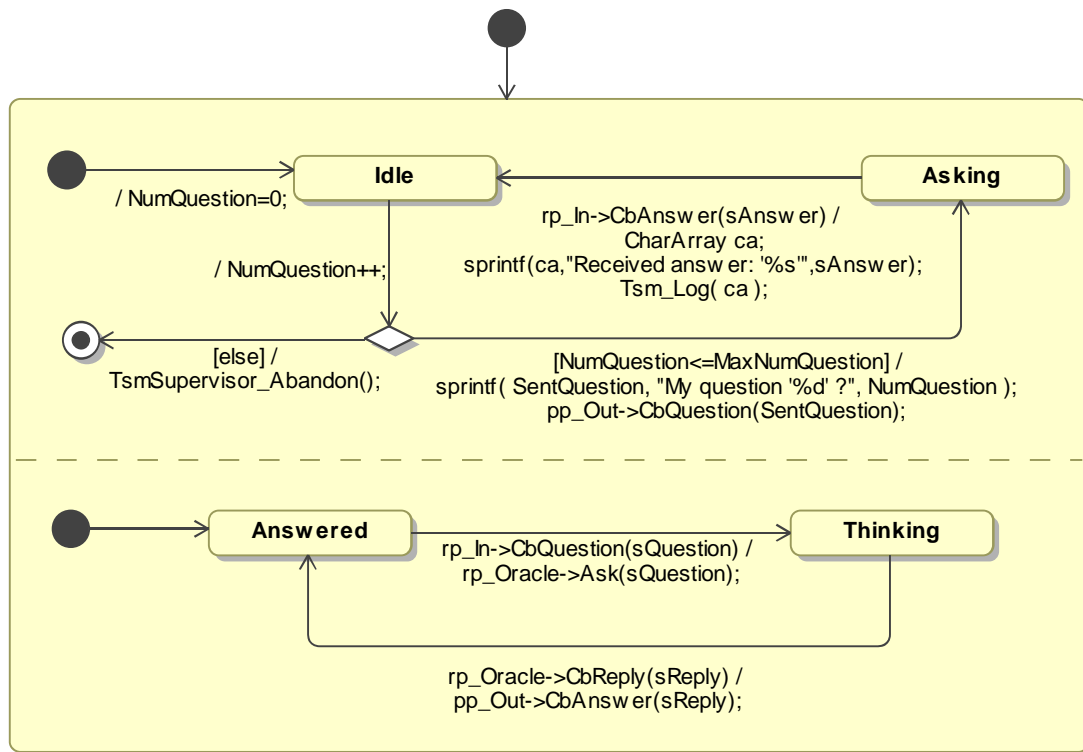
Pythia : OracleServer

**Delphi : OracleClass**

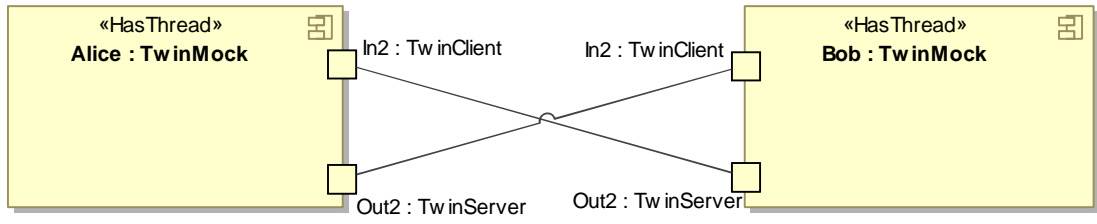
state machine OracleFsm[  OracleFsm ]




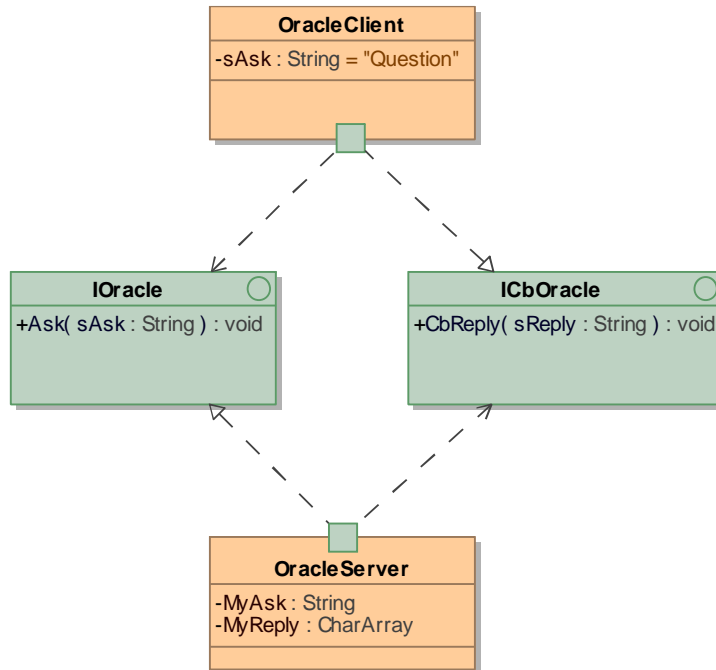
state machine ActorFsm[  ActorFsm ]

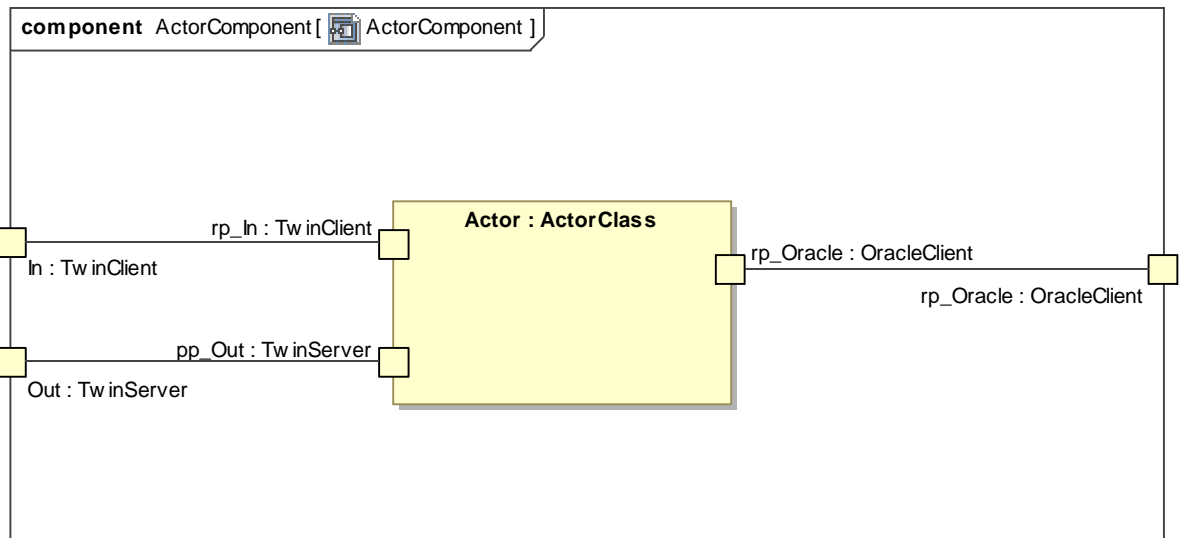


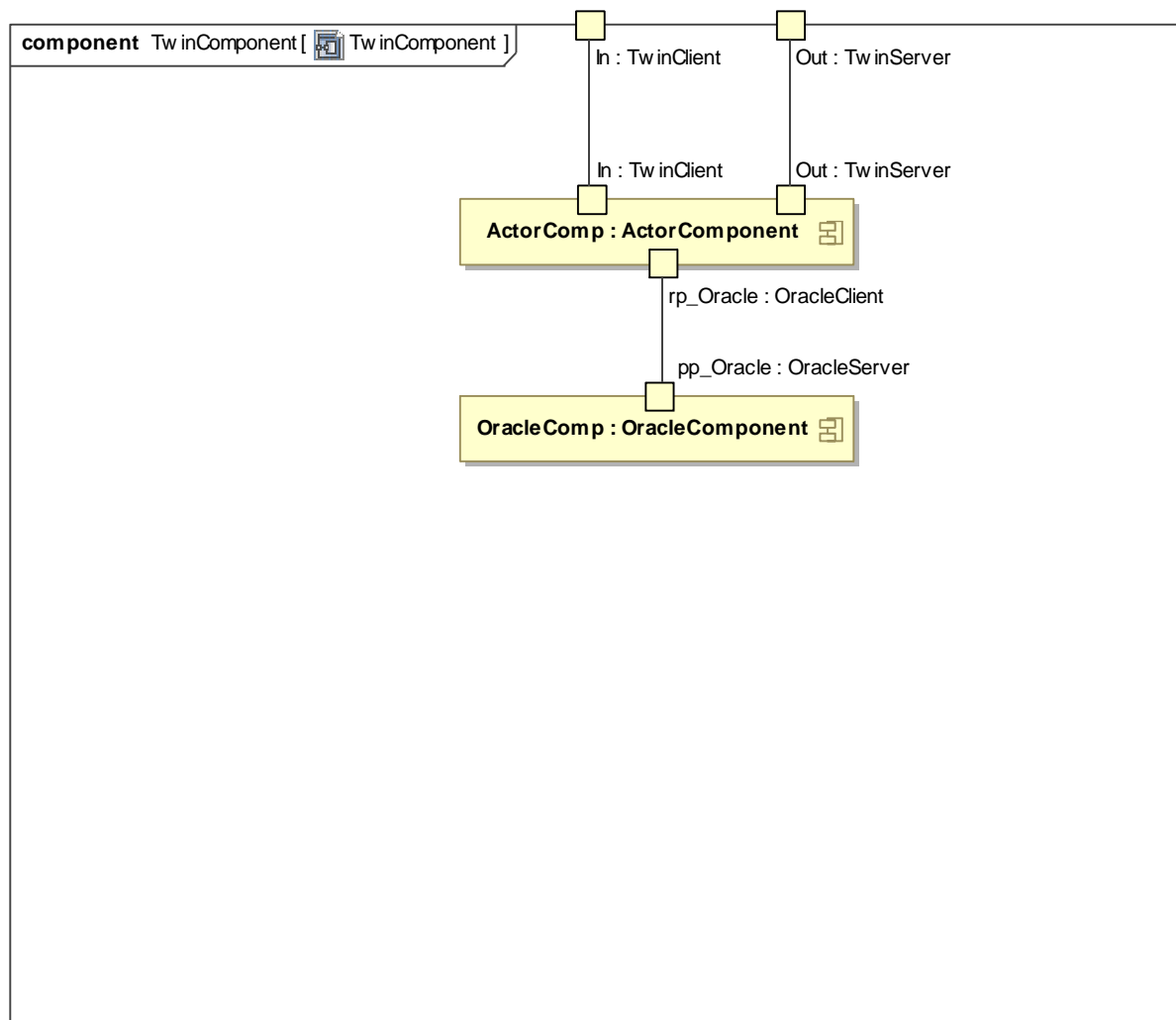
**class** TwinsTest [ TwinsTest ]




package OracleProtocol [  OracleClasses ]

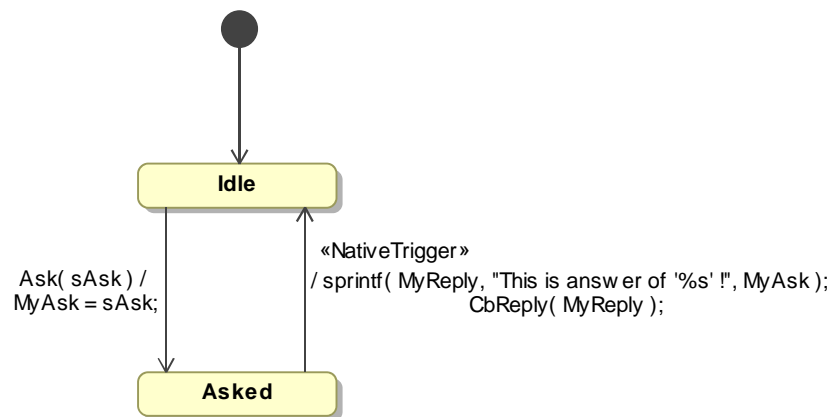





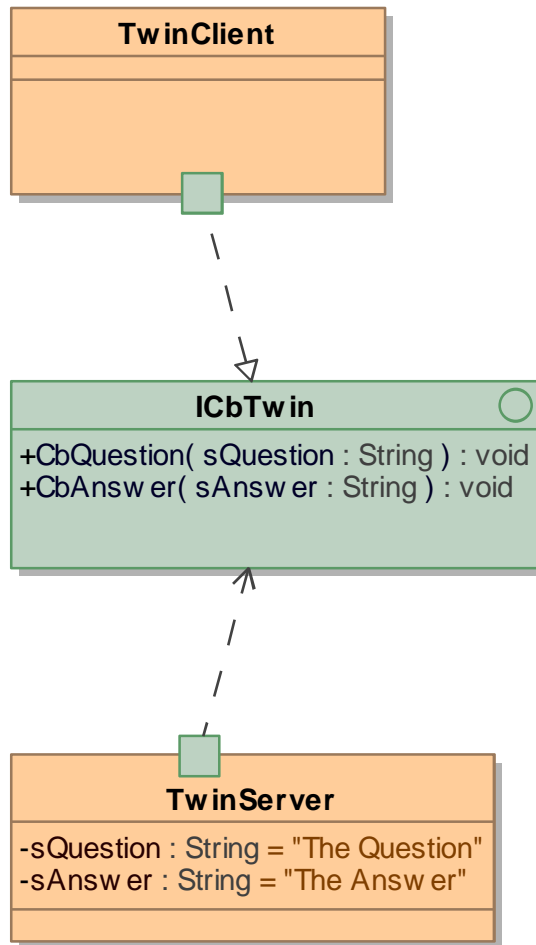


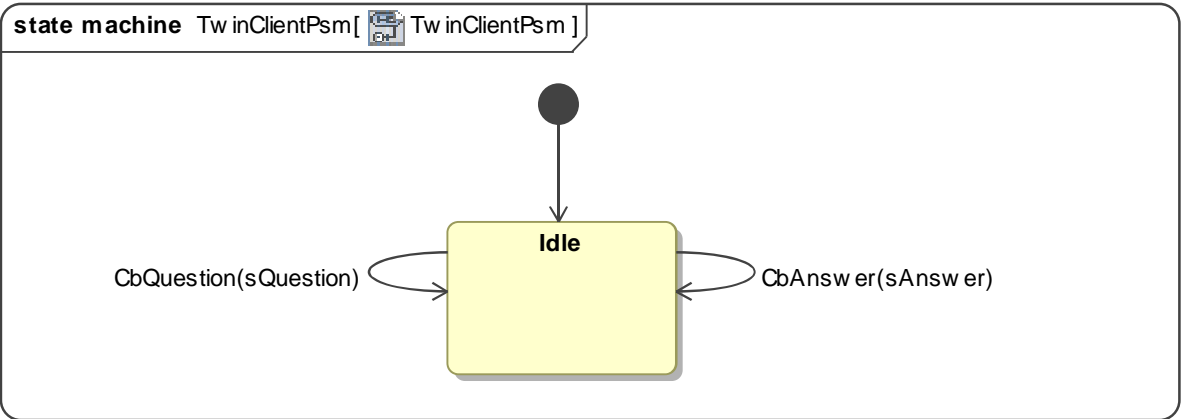


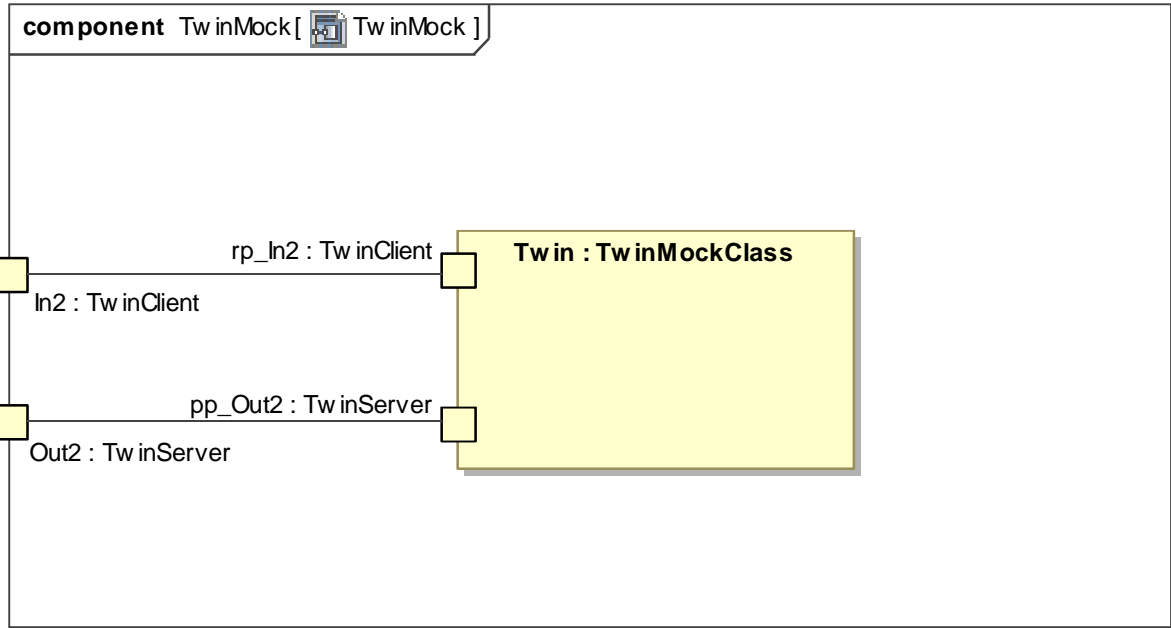
state machine OracleServerPsm[  OracleServerPsm ]



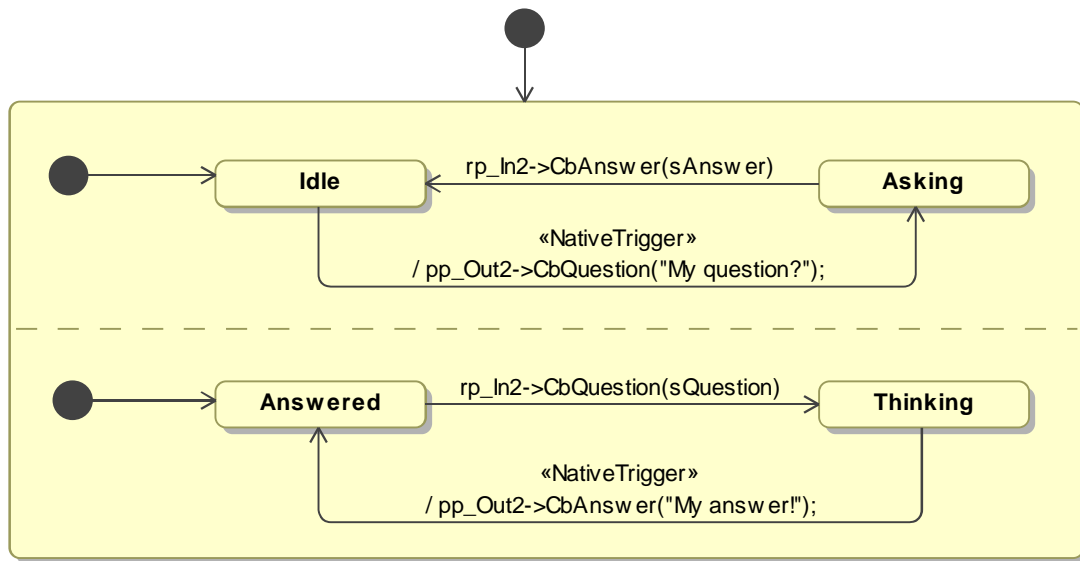
package TwinProtocol[  TwinClasses ]



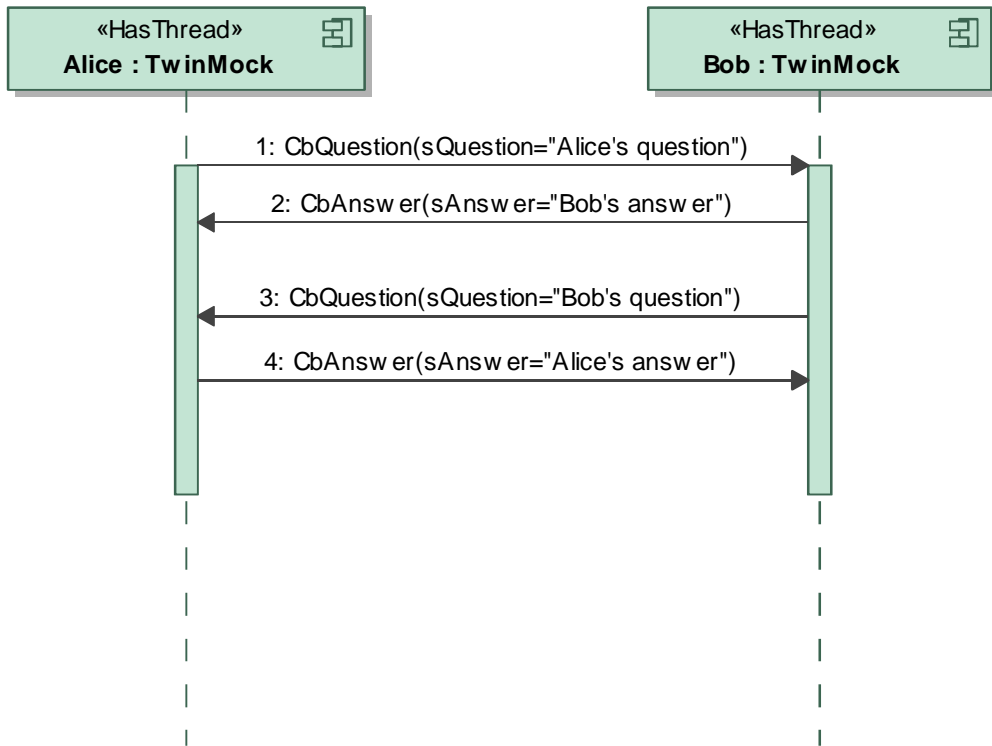


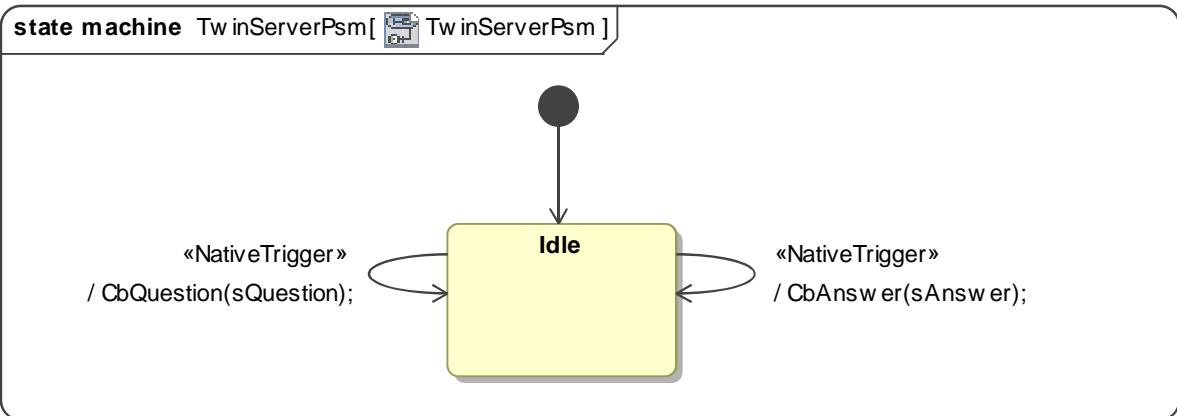


state machine TwinMockFsm[  TwinMockFsm ]



interaction Chat [ Chat ]





state machine OracleClientPsm[  OracleClientPsm ]

